

For engine displacement of:  
 Diesel — 260 to 13,000 CID (4 to 20 liters)

# New!



### Features/Benefits

- Pre-Engaged
- Inline design
- Radial Turbine
- Lube Free
- Weighs only 23 lbs. lightest starter in it's class
- One Hose Hookup
- Infinite Mounting Positions
- SAE1, SAE3 and Cradle mount flanges available
- Oil Bath Lubrication For Gears, Bearing and Seals

### Versatile

- No External Lubricator Required
- Environmentally Safe
- Compact, lightweight design makes installation easy
- Overhung pinion design makes this starter ideal for European engine manufacturers
- Fits most worldwide manufacturers' engines.

### Service

Worldwide service available on completes, accessories  
 1 YEAR. Warranty

### Literature

- Form P7061 Maintenance & Installation Manual
- Form 52499 Brochure

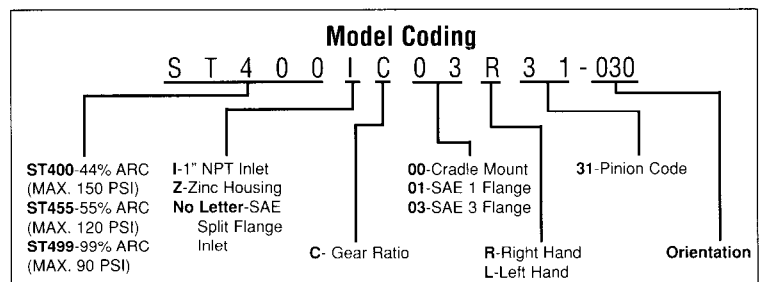
Typical Installation refer to page 53.  
 \* For use with Air only.

### Genuine Parts & Accessories

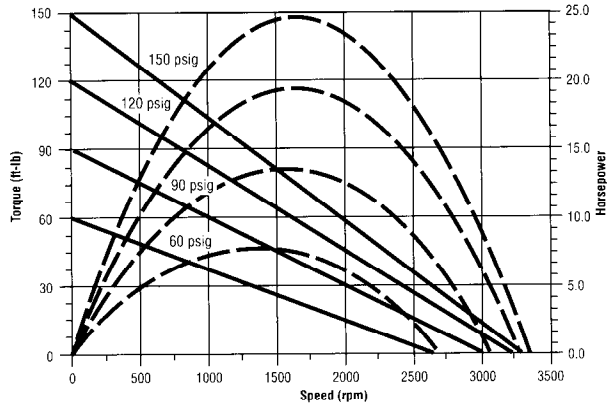
Part No.	Description	Size
ST400-B339	Electronic Relay Valve	N/A
ST400-K17	Inlet Flange Kit	1" NPT
ST400-A339M	Manual Relay Valve	N/A
ST900-267-16	1" Strainer	1" NPT
SRV 100	NPT Relay Valve	N/A

### Common Pinions Available

Part No.	Teeth	D.P./Mod.	P.A.	Rotation
ST400-13-31	12/12	6/8	20.0	R
ST400-13-77	9/9.7	3.0	15.0	R
ST400-13-29	12/13	8/10	20.0	R
ST400-13-32	12/12	6/8	20.0	L
ST400-13-85	11	11.7	15.0	R
ST400-13-15	11	11	20.0	R



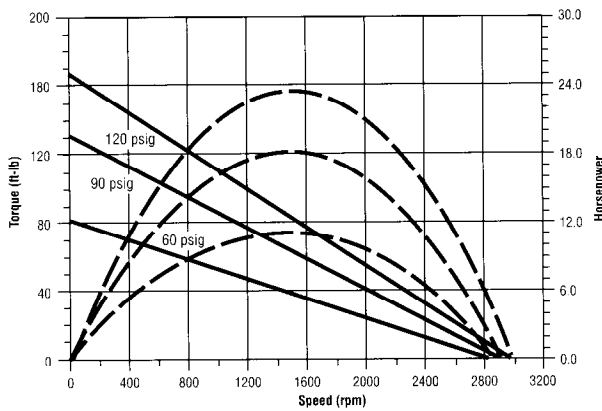
**Series ST400I Performance Curves**



**Performance Curves for ST400 Starters  
Max Pressure 150 PSI**

PSI	Torque @ maximum	Speed @ max hp	HP max	Flow @ max hp
90	90	1500	14	430
120	120	1650	19	600
150	150	1650	25	750

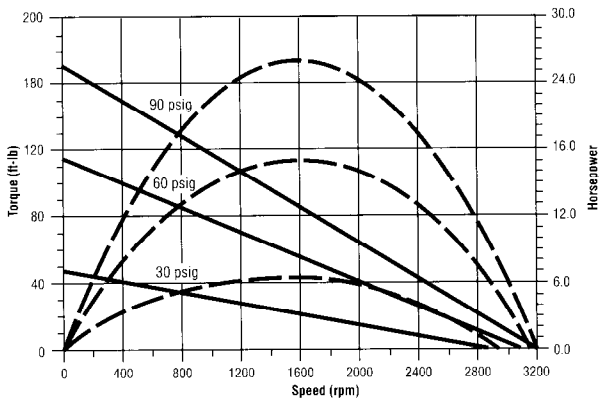
**Series ST455I Performance Curves**



**Performance Curves for ST455 Starters  
Max Pressure 120 PSI**

PSI	Torque @ maximum	Speed @ max hp	HP max	Flow @ max hp
60	80	1400	10	500
90	135	1450	18	650
120	185	1500	23	780

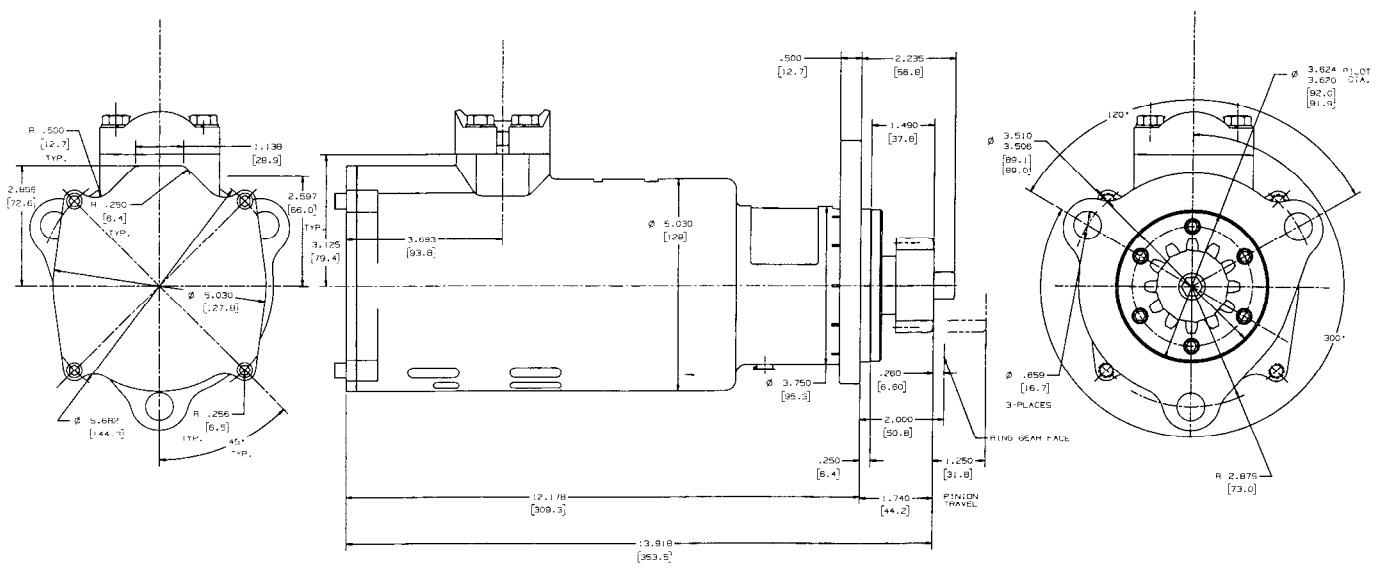
**Series ST499I Performance Curves**



**Performance Curves for ST499 Starters  
Max Pressure 90 PSI**

PSI	Torque @ maximum	Speed @ max hp	HP max	Flow @ max hp
30	50	1550	7	320
60	115	1600	14	550
90	185	1650	26	765

## Series ST400I Dimensions



## Series ST400-B339 Diaphragm Relay Valve

### Features/Benefits

- Diaphragm Type Valve
- O-Ring Flange Connection
- Powder Coated

### Versatile

- Increased reliability, help eliminate freeze-up.
- Less maintenance. Easy to troubleshoot.
- Eliminates air leak at valve.
- Easy installation and maintenance.
- Resists corrosion, durable.
- Electronic or air activated models.

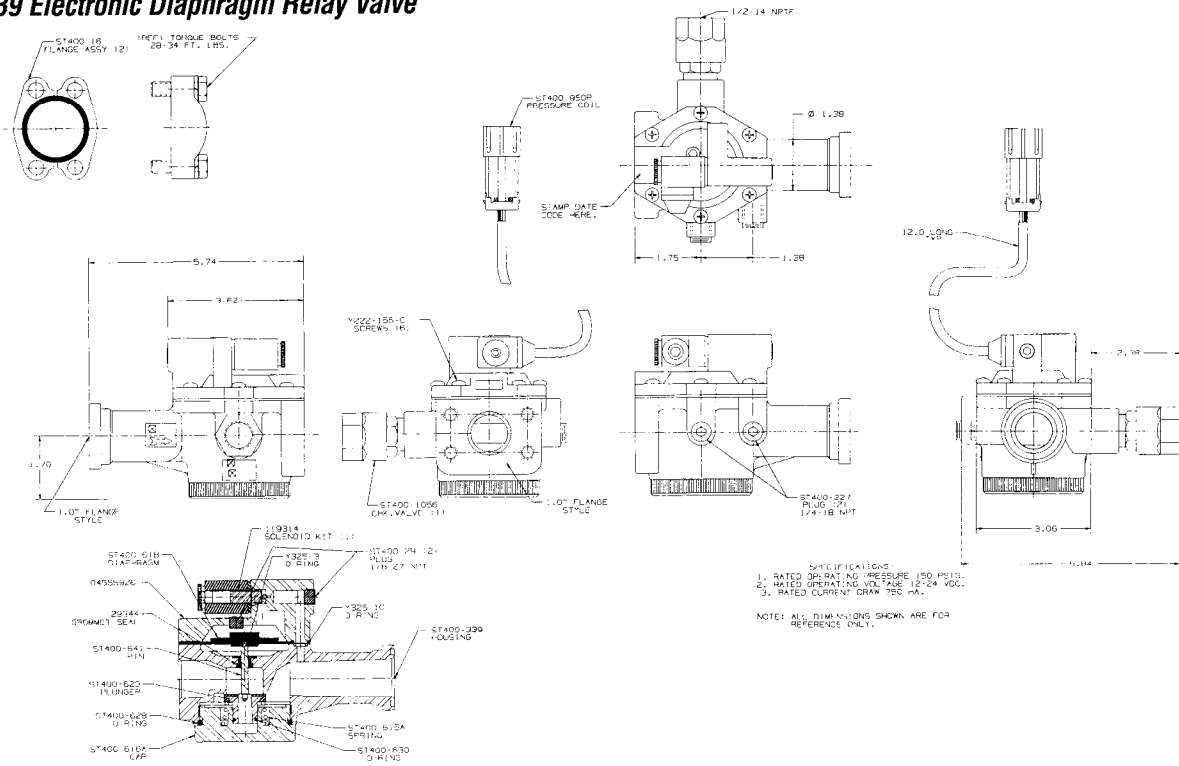
### Literature

Form P7061 Maintenance & Installation Manual

### Genuine Parts & Accessories

Part No.	Description
ST400-K619	Tune-up Kit

**ST400-B339 Electronic Diaphragm Relay Valve**



**ST400-A339M Air Actuated Relay Valve**

